



**Technology
Transfer**

General and track-record

ISC Konstanz offers technology transfer of solar cell and module technologies. We are experienced in supporting our customers through the full process; from design, planning, and tendering, to running in the processes on site with our teams of experienced technologists.

Major examples of successful onsite technology ramp-up are:

- 2015 BiSoN technology to Megacell, Italy
- 2017 BiSoN technology to adani, India
- 2018 BiSoN technology to Asian customer
- 2019 ZEBRA technology to SPIC, China
- 2022 ZEBRA technology to valoe, Lithuania
- 2023 PERC technology, India
- 2023 TOPCon technology, India
- ordered: 2025 poly ZEBRA technology to FuturaSun, Italy



Lejo Joseph Koduvelikulathu
lejo.joseph@isc-konstanz.de
phone: +49-7531-36183-363



Radovan Kopecek
radovan.kopecek@isc-konstanz.de
phone: +49-7531-36183-22

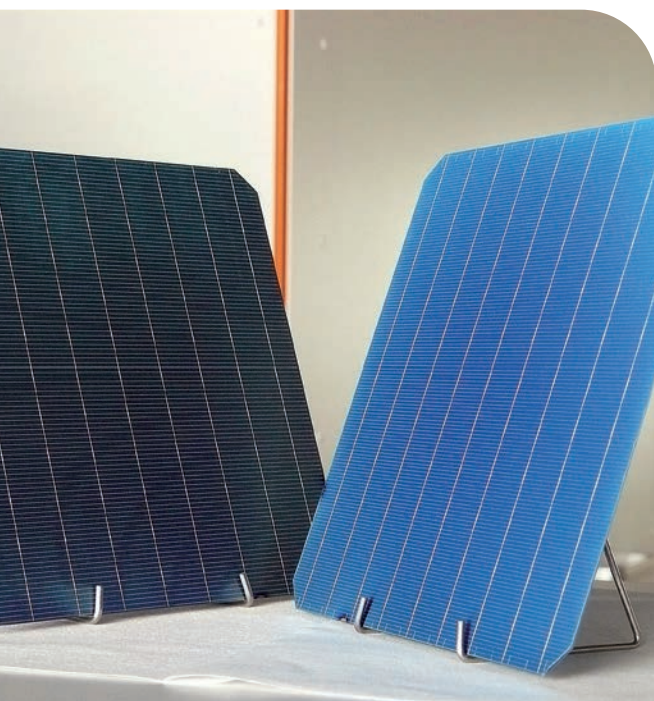
Technology license and technology transfer

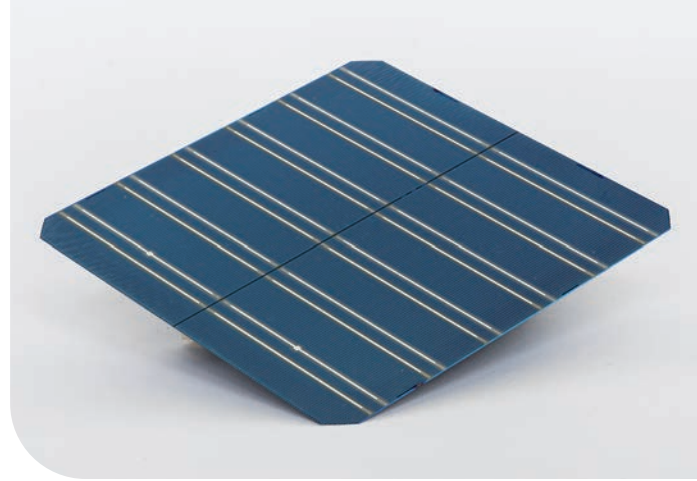
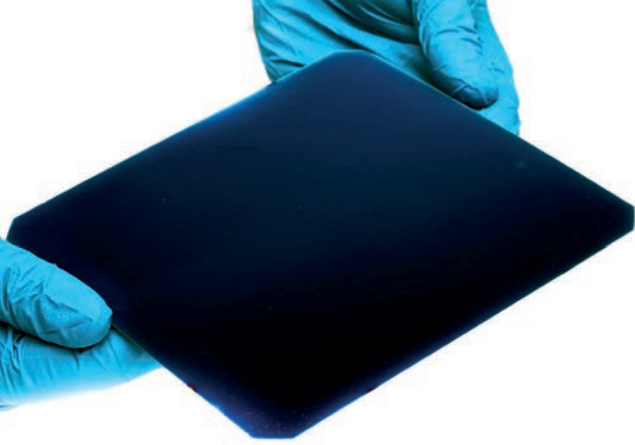
ISC Konstanz offers a technology license for commercial use of the IP and know-how required for industrial manufacturing of ZEBRA, poly ZEBRA (TOPCon IBC) and TOUCAN (TOPCon) solar cells.

In addition to this – under a separate contract – ISC Konstanz offers consultancy and ramp-up support during the set-up of the cell factory as well as for transferring the cell process and ramping up the cell factory.

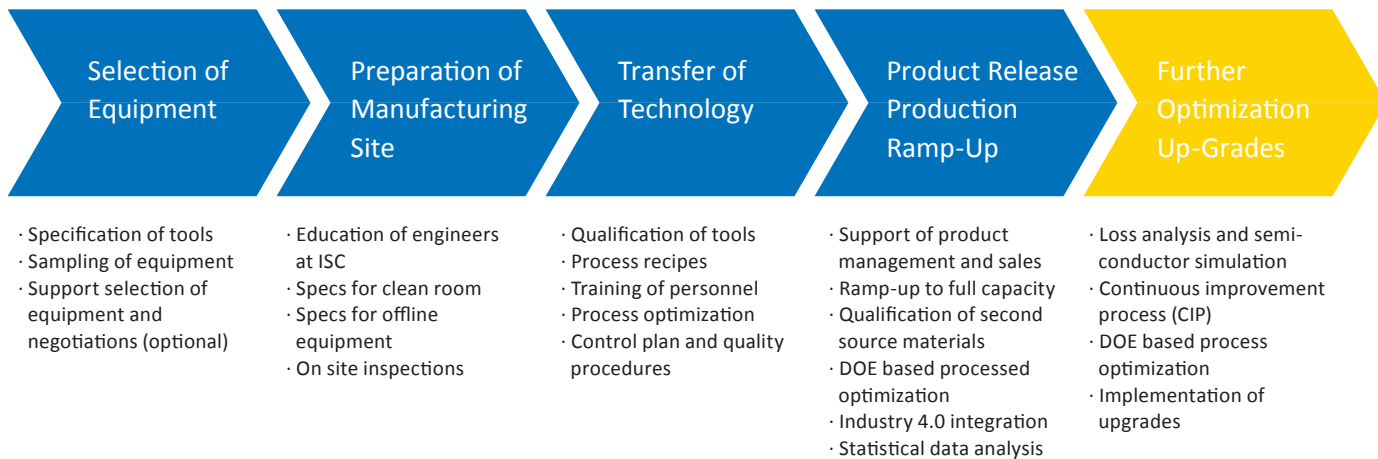
Furthermore, if required by the customer, ISC Konstanz will also gladly offer consultancy and support regarding module design, module BOM and module manufacturing.

Our technology transfer optionally is followed by R&D partnership for future developments.





Typical technology transfer services



R&D support and training

- R&D labs at ISC as well as ISC's expertise can be made available to customer long time before own manufacturing facility is operating
- ISC offer training courses (theoretical and hands-on) for technicians and engineers. Find out more: www.pv-trainings.com
- ISC can qualify cells and modules using its strong expertise and characterisation laboratory (I/V, EL, climate chambers, ...)

ISC Konstanz's Roadmap

- ISC Konstanz has more than 15 years of experience in development and industrialization of n-type cells concepts with boron diffusion
- Our cell concepts: TOUCAN (TOPCon), ZEBRA (IBC) and poly ZEBRA (TOPCon IBC)

High temperature processes adapted with metallisation & ready for integration with low temperature perovskite/thin film deposition process.

tandem ready!

